

ARMOURCOAT®  
SURFACE FINISHES

POLISHED PLASTER

## KonCrete®

Armourcoat KonCrete® is an urban range of polished plaster colours and finishes designed for contemporary projects.

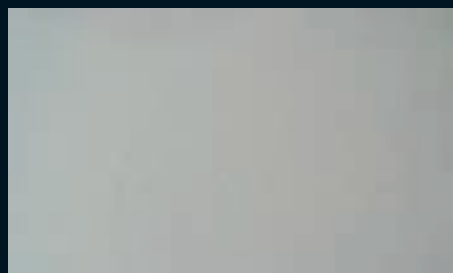
The range offers a wealth of design options to achieve a distinctive modern look, including distressed effects or recessed 'shutter' markings.

We can match to existing concrete or decorative elements to give you the perfect effect.

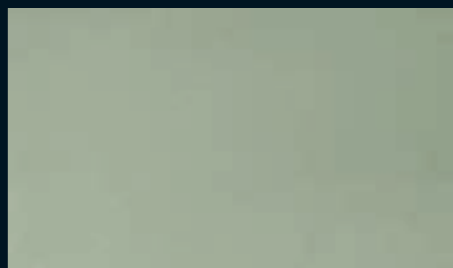
- A natural mineral product created from ultra-fine lime putty, marble powder and special additives.
- Contains 40% pre-consumer recycled marble
- Low VOCs
- Class '0' / 'A' fire-rating



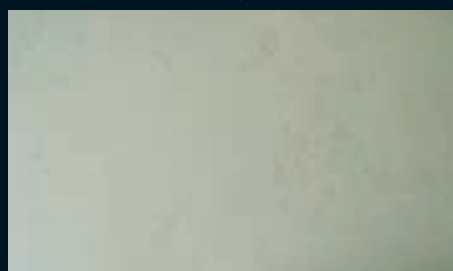
## Honed



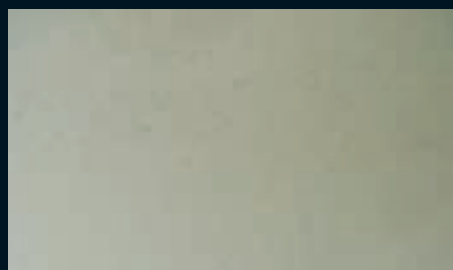
KN 6734



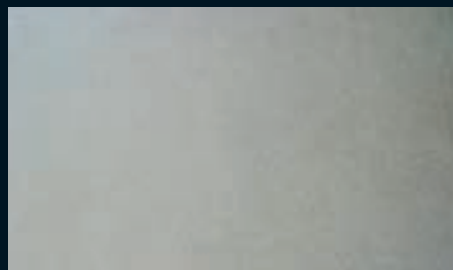
KN 6767



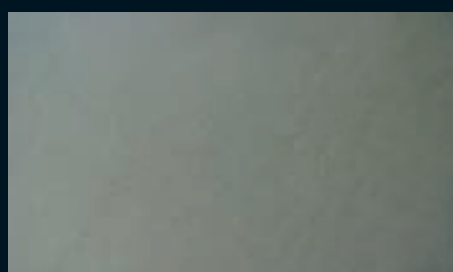
KN 6766



KN 6775

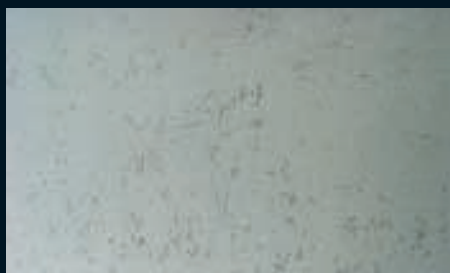


KN 6733

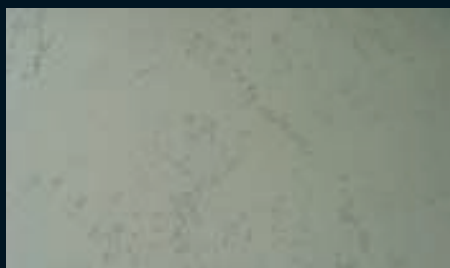


KN 6735

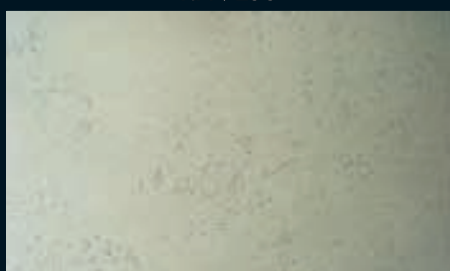
## Honed with Colourwash



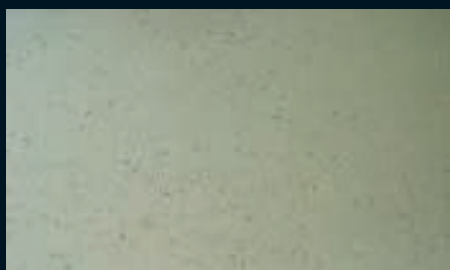
KN 7239



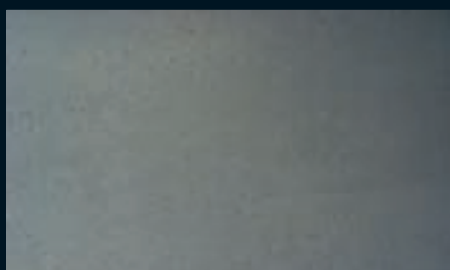
KN 7238



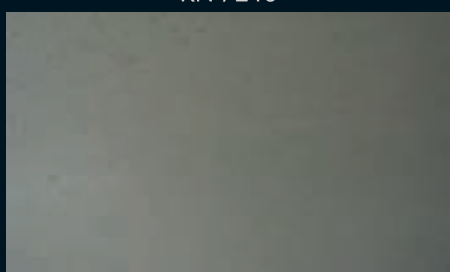
KN 7237



KN 7241

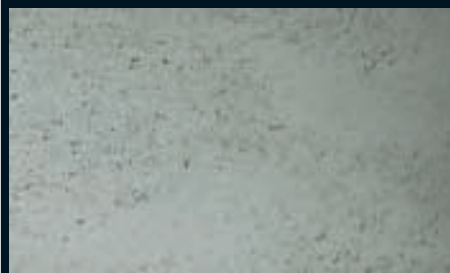


KN 7240

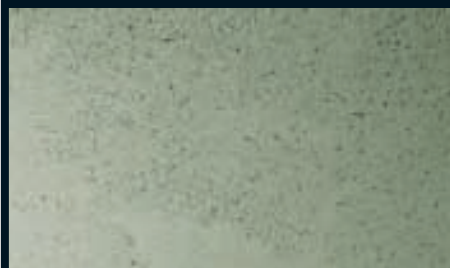


KN 7236

## Textured with Colourwash



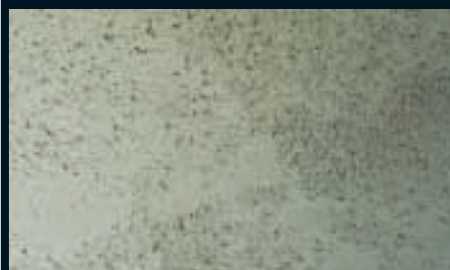
KN 7244



KN 7245



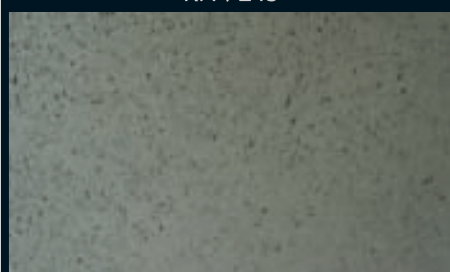
KN 7246



KN 7242



KN 7243



KN 7247

Image: Ink Restaurant, Kiev - Armourcoat KonCrete® finish with additional recessed 'shutter' markings Installation: Faktura Design: Sergey Makhno

Armourcoat Surface Finishes Morewood Close London Road Sevenoaks Kent TN13 2HU  
T: +44 (0)1732 460668 F: +44 (0)1732 450930 E: [specs@armourcoat.co.uk](mailto:specs@armourcoat.co.uk)

[www.armourcoat.com](http://www.armourcoat.com)

KN0513